

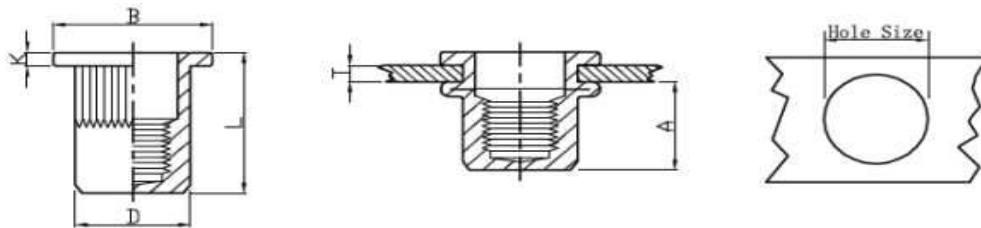


Rivnut Large Flange Steel - Closed End

Material Low Carbon Steel
Finish Zinc Plated



Highest resistance to vibration and spin out of all round bodied rivnuts. Flange are wide and near flush finish. Very wide grip range.



Part Number	Thread	Grip Range	Hole Size	D	L	B	K
RNLFSSE04CE	M4	0.5-2.5	6	6.00	15.60	9.00	0.80
RNLFSSE05CE	M5	0.5-2.5	7	7.00	17.90	10.00	1.00
RNLFSSE06CE	M6	0.5-3.0	9	9.00	21.40	13.00	1.50
RNLFSSE08CE	M8	1.0-3.0	11	11.00	24.45	16.00	1.50
RNLFSSE10CE	M10	1.0-3.5	13	12.95	29.00	16.00	1.70

Thread Size	Pull-Out	Push-Out	Maximum Torque NM
	KN	KN	
M4	5.70	2.10	4.90
M5	10.70	3.00	7.80
M6	11.10	5.30	12.70
M8	18.10	6.90	16.70
M10	28.60	8.70	40.00

Dimensions and specifications are subject to change without notice.